

# Australian Teacher Registration

## What is Australian teacher registration?

Registration is granted and managed by teacher regulatory authorities in each Australian state and territory. It provides a person with a 'statutory licence' to perform the duties of a teacher as defined in the particular jurisdiction.

## Is Australian teacher registration considered during a skills assessment?

From 21 July 2023, Australian teacher registration may be considered as part of the assessment process. If you hold full or provisional Australian teacher registration, you need to include the registration number in your application. You must also upload official documentation that shows the status of your registration and any conditions.

## Is Australian teacher registration required for a skills assessment?

No. You can submit an application without Australian teacher registration.

## Is Australian teacher registration all I need to demonstrate suitability in a skills assessment?

No. Applicants must submit the required evidence against the assessment criteria, including the identity requirements.

## Can I still submit an application if I have Australian teacher registration but do not meet AITSL's criteria?

Yes. Applicants who hold Australian teacher registration can consider applying. Applicants can review the flow chart on the next page to determine if AITSL may consider your registration (and potentially, your employment) favourably as part of your application.

## Can I be certain that AITSL will favourably consider my Australian teacher registration?

It is the applicant's responsibility to determine whether they have the appropriate evidence for their nominated occupation. The flow chart shows how AITSL considers Australian teacher registration (and sometimes employment) in a skills assessment.

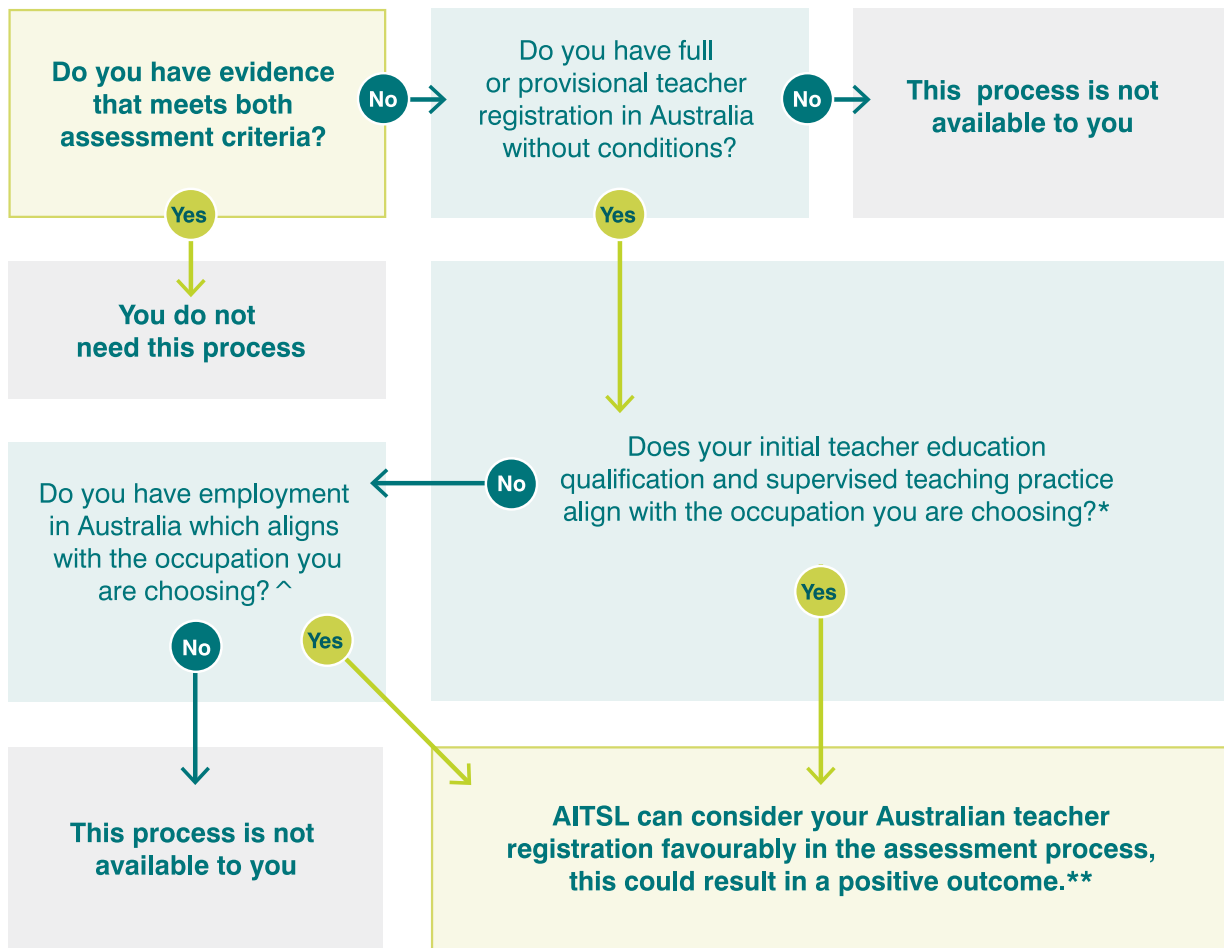
AITSL does not provide a pre-assessment service and cannot provide you with advice via email as to how your specific situation will be assessed.

## What employment would AITSL consider in conjunction with the Australian teacher registration?

AITSL will consider employment as a teacher in the nominated occupation in Australia.

## Are employment statements required for a skills assessment?

No. You may apply without employment statements. You only need to submit an employment statement when prompted to do so.



\*For example, if you select the Secondary school teacher occupation, then you must have completed: a) a secondary initial teacher education qualification AND b) at least 45 days supervised teaching practice with secondary school aged students in secondary settings.

^For example, if you select the Secondary school teacher occupation, then you must be employed as a teacher in an Australian secondary school setting.

\*\*AITSL cannot provide a guaranteed assessment outcome. All applications are assessed based on the evidence submitted at the time of an application.